

# Investor Day

## Measurement and Automation Product Division

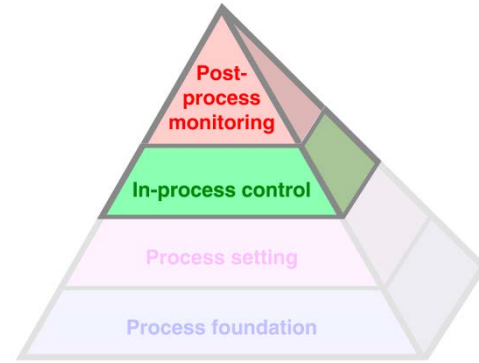
15<sup>th</sup> May 2014

*Presented by Greg Nixon*

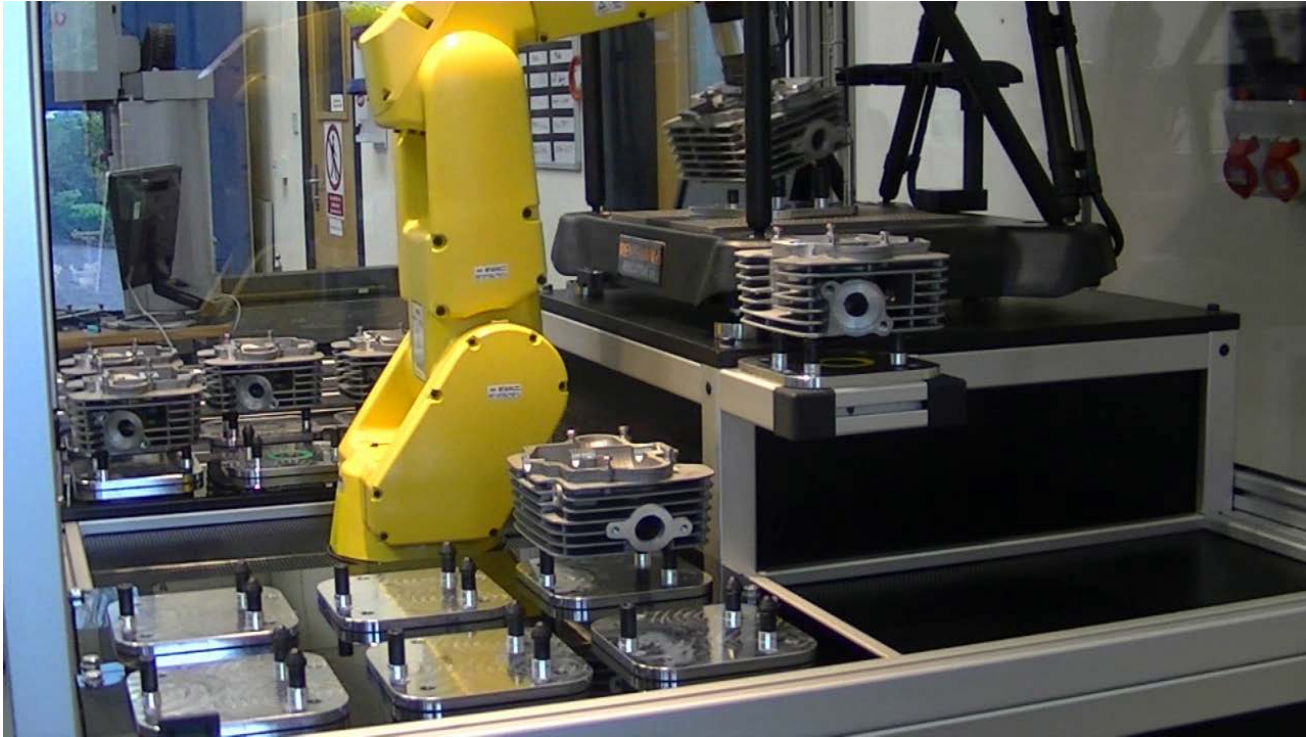


# Customer needs

- Markets and drivers
  - Automotive, Aerospace, Consumer Electronics
  - A range of supplier tiers
  - Demonstration of traceability & compliance (especially to higher tiers)
  - Increase of throughput with minimal capital expenditure
  - Reduction of Total Cost of Ownership / investment to meet customer needs
  - Reduction of scrap
  - Lack of in-house metrology expertise = more willingness to look outside



# Engineering solutions – product and process



## Engineering solutions – process

### A unique approach to gauging (checking) parts

1. Calibrate the master part on any CMM
2. Measure the master part on Equator
3. Compare subsequent parts to the master part
4. Equator now measures relative to CAD nominals

Measurements certified by using calibrated master

Comparison uncertainty  $\pm 0.002$  mm or better



## Engineering solutions – hardware

- Contrasting custom gauges, traditional 3-axis CMMs and Equator
- EQ300 and EQ300 Extended Height
  - A comparator for medium to high volume gauging
  - Robust: proven on the shop-floor and thermally ‘insensitive’
  - Switch between multiple parts, re-program for design changes
  - Considerably lower cost than typical custom gauges



Controller



Joystick

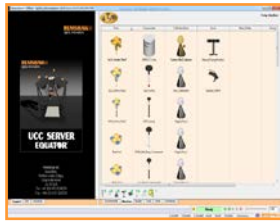


Automation  
I/O unit

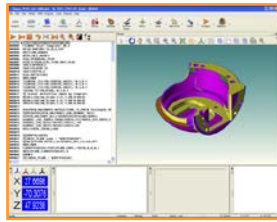


## Engineering solutions – software

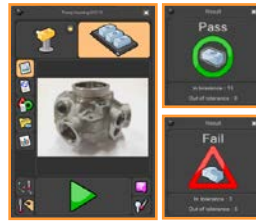
Manager & Server



Modus



Organiser



Process Monitor Automation



- Simple programme select/run interface design for shop-floor operators
- From manual part loading, to fully-automated machining cells
- Easy interface to 3<sup>rd</sup> party software (AutoComp, SPC packages, etc.)

## Successful outcomes

### Conroe Automation, USA

- ✓ “The turning cell paid for itself in 18 days”
- ✓ Traditional CMM slower; traditional custom gauge more costly and difficult to set up
- ✓ Automation for fully unmanned operation to increase throughput
- ✓ 100% inspection to ensure only correct parts are shipped
- ✓ Tool offset correction using Equator data



## Successful outcomes

### Kishan Auto, India

- ✓ Increased throughput
- ✓ Reduced cost of gauge ownership
- ✓ Catering for a wide range of shop floor temperatures (19°C → 40°C)
- ✓ One Equator machine inspects multiple conrod variants
- ✓ Now able to offer 100% inspection & guarantee quality to their customers
- ✓ “Equator has taken us to another level”

